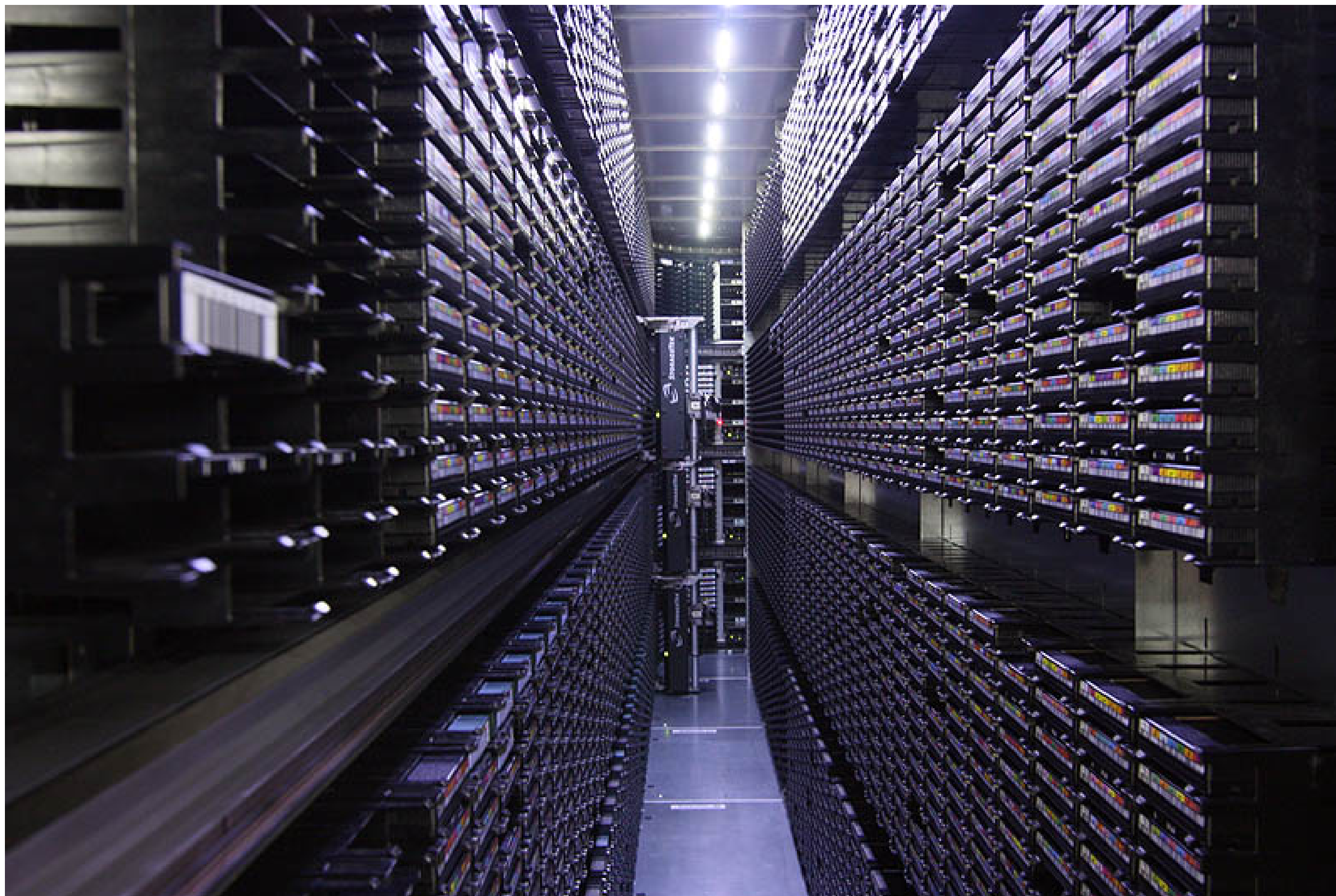


Introduction to DLTP

Digital Long Term Preservation (DLTP)



Where to begin?

Imagine you find a digital copy of a media file that you want to use...

Step by step

You want to use/open it:

- What is it stored on?
- What do you do?
- What do you expect?
- What do you think is necessary for that to be possible?

Components to deal with?

- Which carrier?
- Which format?
- Which properties?
- Which player/tools?
- Which storage?
- Which catalog/database?
- For whom?

Layers / Components

**"Onions have layers, Ogres
have layers. You get it?"**

Layers / Components

- Physical carrier (+drive?)
- Hardware interface (controller, cables, schematics, ...)
- Software interface (driver, protocols, ...)
- Filesystem
- **The File**
- Container format
- Content format(s) (codecs, MD formats, etc)
- The actual content.

The other direction

You were looking for something specific in a collection...



Okay, Digital:



Layers / Components

- A Collection
- A tool to search & find
- Retrieve data from storage
- Access a copy
- **The File**

The Challenge Begins

